

TEST REPORT

Applicant: Xreal Inc.
Address: 440N. Wolfe Rd. Unit E417 Sunnyvale, CA 94085

The following sample(s) was/were submitted and identified on behalf of the client as:

Sample name: XREAL Hub
Model: X7007
Material: /
Manufacturer: /
Production Date: /
Sample Received Date: 2024.02.20
Testing period: 2024.02.20~2024.03.05

According to: Please refer to next page(s)
Testing methods: Please refer to next page(s)
Test results: Please refer to next page(s)

Compiled by: Asta Zhou

Reviewed by: Encore

Approved by: Emily Yang

Date: 2024.03.05

Authorized signatory: Emily Yang

Testing methods:

1. According to 2011/65/EU and (EU)2015/863, the content of toxic and harmful substances in the sample is analyzed using XRF. The screening limits for restricted elements in the sample are shown in the table below (unit: mg/kg)

Table 1: XRF Screening Limit in mg/kg for regulated elements in various matrices.

Elements	IEC 62321-3-1:2013 Screening Limit (mg/kg)			MDL (mg/kg)	
	Polymer materials	Metallic materials	Composite materials	Polymer materials	Other materials
Pb	$BL \leq (700-3\sigma) < X < (1300+3\sigma) \leq OL$	$BL \leq (700-3\sigma) < X < (1300+3\sigma) \leq OL$	$BL \leq (500-3\sigma) < X < (1500+3\sigma) \leq OL$	10	50
Hg	$BL \leq (700-3\sigma) < X < (1300+3\sigma) \leq OL$	$BL \leq (700-3\sigma) < X < (1300+3\sigma) \leq OL$	$BL \leq (500-3\sigma) < X < (1500+3\sigma) \leq OL$	10	50
Cd	$BL \leq (70-3\sigma) < X < (130+3\sigma) \leq OL$	$BL \leq (70-3\sigma) < X < (130+3\sigma) \leq OL$	$LOD < X < (150+3\sigma) \leq OL$	10	50
Br	$BL \leq (300-3\sigma) < X$	Not applicable	$BL \leq (250-3\sigma) < X$	10	50
Cr	$BL \leq (700-3\sigma) < X$	$BL \leq (700-3\sigma) < X$	$BL \leq (500-3\sigma) < X$	10	50
Explanatory note:	BL=Under the screening limit, OL=Above the screening limit, The symbol "X" marks the region, where further investigation is necessary, The term "σ" expresses the repeatability of the analyzer at the action level, LOD=Limit of Detection				

2. When XRF testing cannot determine whether the sample is qualified, further chemical methods are used to test the content of toxic and harmful substances in the sample

Test Item	Test Method	MDL	Limit
Lead and its compounds	IEC 62321-5:2013	2 mg/kg	≤1000mg/kg
Cadmium and its compounds	IEC 62321-5:2013	2 mg/kg	≤100mg/kg
Mercury and its compounds	IEC62321-4:2013/AMD1:2017	2 mg/kg	≤1000mg/kg
Cr ⁶⁺	Metal	IEC 62321-7-1:2015	≤1000mg/kg
	Non metal	IEC 62321-7-2:2017	
PBBs	IEC 62321-6:2015	5 mg/kg	≤1000mg/kg
PBDEs	IEC 62321-6:2015	5 mg/kg	≤1000mg/kg

3. Testing instrument

Instrument Name	Instrument Model	Number of Instrument	Calibration validity
XRF	EDX-LE	E-RH-T014	2024-11-07
ICP-OES	720	E-RH-T024	2024-10-27
UV-VIS	TU-1901	E-RH-T004	2024-06-02
GC-MS	7890A/5975C	E-RH-T013	2025-06-06

Sample description:

Test No.	Sample description	Note
1.1	metallic shell	Test
1.2	Black plastic cover	Test
1.3	Black plastic cover	As1.2
1.4	Plug housing	Test
1.5	Black plastic cement	Test
1.6	Silver metal	Test
1.7	Silver metal	As1.6
1.8	Sealing glue	Test
1.9	Silver metal sheet	Test
1.10	Black plastic	Test
1.11	Silver metal sheet	As1.9
1.12	Metal contact piece	Test
1.13	Yellow tape	Test
1.14	Black plastic	Test
1.15	PCB board	Test

1.16	Transparent sealing adhesive	Test
1.17	Black plastic	Test
1.18	Yellow sealing adhesive	Test
1.19	Black plastic cement	Test
1.20	Black sleeve	Test
1.21	Black plastic cement	As1.19
1.22.1	Shield wire coating	Test
1.22.2	Shielding wire substrate	Test
1.23	Shielding film	Test
1.24	Yellow line	Test
1.25	White line	Test
1.26	Copper tape	Test
1.27.1	Silver metal coating	Test
1.27.2	Silver metal substrate	Test
1.28	Green plastic film	Test
1.29	Shielding film	Test
1.30	White thread leather	Test
1.31.1	Core coating	Test
1.31.2	Core substrate	Test
1.32	Gray line skin	Test
1.33.1	Core coating	As 1.31.1
1.33.2	Core substrate	As 1.31.2
1.34	Purple plastic film	Test

1.35	Light green thread leather	Test
1.36	Blue plastic film	Test
1.37	Orange plastic film	Test
1.38	Yellow plastic film	Test
1.39.1	Core coating	As1.31.1
1.39.2	Core substrate	As1.31.2
1.40	Brown thread leather	Test
1.41	Red thread leather	Test
1.42	Light brown thread leather	Test
1.43	Blue thread leather	Test
1.44	Yellow thread leather	Test
1.45	Orange thread leather	Test
1.46	Metal cover	Test
1.47	Tape	Test
1.48	Silver metal case	Test
1.49	Black plastic	Test
1.50	Contact plate	Test
1.51	Silver metal sheet	Test
1.52	Chip IC	Test
1.53	Chip IC	As1.52
1.54	Chip inductance	Test
1.55	Chip capacitance	Test
1.56	Chip IC	As1.52

1.57	Chip IC	As1.52
1.58	Chip capacitance	As1.55
1.59	Chip IC	As1.52
1.60	Chip IC	As1.52
1.61	Patch resistance	Test
1.62	Patch resistance	As1.61
1.63	Chip capacitance	Test
1.64	Black plastic	Test
1.65	PCB board	Test
1.66.1	Chip inductor body	Test
1.66.2	Chip inductor core	Test
1.67	Chip IC	As1.52
1.68.1	Chip inductor body	As1.66.1
1.68.2	Chip inductor core	As1.66.2
1.69	Chip IC	As1.52

Same material information provided by the customer

Testing Results:

1.Pb, Cd, Hg, Cr⁶⁺, PBBs, PBDEs

Test No.	Sample description	Test Item	XRF Results (mg/kg)	Chemical confirmation results(mg/kg)	Conclusion	
1.1	metallic shell	Pb	BL	/	Pass	
		Cd	BL	/		
		Hg	BL	/		
		Cr	Cr ⁶⁺	BL		/
1.2	Black plastic cover	Pb	BL	/	Pass	
		Cd	BL	/		
		Hg	BL	/		
		Cr	Cr ⁶⁺	BL		/
		Br	PBBs	BL		/
PBDEs	/					
1.4	Plug housing	Pb	BL	/	Pass	
		Cd	BL	/		
		Hg	BL	/		
		Cr	Cr ⁶⁺	BL		/
1.5	Black plastic cement	Pb	BL	/	Pass	
		Cd	BL	/		
		Hg	BL	/		
		Cr	Cr ⁶⁺	BL		/
		Br	PBBs	BL		/
PBDEs	/					

Test No.	Sample description	Test Item		XRF Results (mg/kg)	Chemical confirmation results(mg/kg)	Conclusion
1.6	Silver metal	Pb		BL	/	Pass
		Cd		BL	/	
		Hg		BL	/	
		Cr	Cr ⁶⁺	X	Negative	
1.8	Sealing glue	Pb		BL	/	Pass
		Cd		BL	/	
		Hg		BL	/	
		Cr	Cr ⁶⁺	BL	/	
		Br	PBBs	BL	/	
			PBDEs		/	
1.9	Silver metal sheet	Pb		BL	/	Pass
		Cd		BL	/	
		Hg		BL	/	
		Cr	Cr ⁶⁺	X	Negative	
1.10	Black plastic	Pb		BL	/	Pass
		Cd		BL	/	
		Hg		BL	/	
		Cr	Cr ⁶⁺	BL	/	
		Br	PBBs	BL	/	
			PBDEs		/	

Test No.	Sample description	Test Item		XRF Results (mg/kg)	Chemical confirmation results(mg/kg)	Conclusion
1.12	Metal contact piece	Pb		BL	/	Pass
		Cd		BL	/	
		Hg		BL	/	
		Cr	Cr ⁶⁺	BL	/	
1.13	Yellow tape	Pb		BL	/	Pass
		Cd		BL	/	
		Hg		BL	/	
		Cr	Cr ⁶⁺	BL	/	
		Br	PBBs	BL	/	
			PBDEs		/	
1.14	Black plastic	Pb		BL	/	Pass
		Cd		BL	/	
		Hg		BL	/	
		Cr	Cr ⁶⁺	BL	/	
		Br	PBBs	BL	/	
			PBDEs		/	

Test No.	Sample description	Test Item		XRF Results (mg/kg)	Chemical confirmation results(mg/kg)	Conclusion
1.15	PCB board	Pb		BL	/	Pass
		Cd		BL	/	
		Hg		BL	/	
		Cr	Cr ⁶⁺	BL	/	
		Br	PBBs	BL	/	
			PBDEs		/	
1.16	Transparent sealing adhesive	Pb		BL	/	Pass
		Cd		BL	/	
		Hg		BL	/	
		Cr	Cr ⁶⁺	BL	/	
		Br	PBBs	BL	/	
			PBDEs		/	
1.17	Black plastic	Pb		BL	/	Pass
		Cd		BL	/	
		Hg		BL	/	
		Cr	Cr ⁶⁺	BL	/	
		Br	PBBs	BL	/	
			PBDEs		/	

Test No.	Sample description	Test Item		XRF Results (mg/kg)	Chemical confirmation results(mg/kg)	Conclusion
1.18	Yellow sealing adhesive	Pb		BL	/	Pass
		Cd		BL	/	
		Hg		BL	/	
		Cr	Cr ⁶⁺	BL	/	
		Br	PBBs	BL	/	
			PBDEs		/	
1.19	Black plastic cement	Pb		BL	/	Pass
		Cd		BL	/	
		Hg		BL	/	
		Cr	Cr ⁶⁺	BL	/	
		Br	PBBs	BL	/	
			PBDEs		/	
1.20	Black sleeve	Pb		BL	/	Pass
		Cd		BL	/	
		Hg		BL	/	
		Cr	Cr ⁶⁺	BL	/	
		Br	PBBs	BL	/	
			PBDEs		/	

Test No.	Sample description	Test Item		XRF Results (mg/kg)	Chemical confirmation results(mg/kg)	Conclusion
1.22.1	Shield wire coating	Pb		BL	/	Pass
		Cd		BL	/	
		Hg		BL	/	
		Cr	Cr ⁶⁺	/	Negative	
1.22.2	Shielding wire substrate	Pb		BL	/	Pass
		Cd		BL	/	
		Hg		BL	/	
		Cr	Cr ⁶⁺	BL	/	
1.23	Shielding film	Pb		BL	/	Pass
		Cd		BL	/	
		Hg		BL	/	
		Cr	Cr ⁶⁺	BL	/	
1.24	Yellow line	Pb		BL	/	Pass
		Cd		BL	/	
		Hg		BL	/	
		Cr	Cr ⁶⁺	BL	/	
		Br	PBBs	BL	/	
			PBDEs		/	

Test No.	Sample description	Test Item		XRF Results (mg/kg)	Chemical confirmation results(mg/kg)	Conclusion
1.25	White line	Pb		BL	/	Pass
		Cd		BL	/	
		Hg		BL	/	
		Cr	Cr ⁶⁺	BL	/	
		Br	PBBs	BL	/	
			PBDEs		/	
1.26	Copper tape	Pb		BL	/	Pass
		Cd		BL	/	
		Hg		BL	/	
		Cr	Cr ⁶⁺	BL	/	
1.27.1	Silver metal coating	Pb		BL	/	Pass
		Cd		BL	/	
		Hg		BL	/	
		Cr	Cr ⁶⁺	/	Negative	
1.27.2	Silver metal substrate	Pb		BL	/	Pass
		Cd		BL	/	
		Hg		BL	/	
		Cr	Cr ⁶⁺	BL	/	

Test No.	Sample description	Test Item		XRF Results (mg/kg)	Chemical confirmation results(mg/kg)	Conclusion
1.28	Green plastic film	Pb		BL	/	Pass
		Cd		BL	/	
		Hg		BL	/	
		Cr	Cr ⁶⁺	BL	/	
		Br	PBBs	BL	/	
			PBDEs		/	
1.29	Shielding film	Pb		BL	/	Pass
		Cd		BL	/	
		Hg		BL	/	
		Cr	Cr ⁶⁺	BL	/	
1.30	White thread leather	Pb		BL	/	Pass
		Cd		BL	/	
		Hg		BL	/	
		Cr	Cr ⁶⁺	BL	/	
		Br	PBBs	BL	/	
			PBDEs		/	
1.31.1	Core coating	Pb		BL	/	Pass
		Cd		BL	/	
		Hg		BL	/	
		Cr	Cr ⁶⁺	/	Negative	

Test No.	Sample description	Test Item		XRF Results (mg/kg)	Chemical confirmation results(mg/kg)	Conclusion
1.31.2	Core substrate	Pb		BL	/	Pass
		Cd		BL	/	
		Hg		BL	/	
		Cr	Cr ⁶⁺	BL	/	
1.32	Gray line skin	Pb		BL	/	Pass
		Cd		BL	/	
		Hg		BL	/	
		Cr	Cr ⁶⁺	BL	/	
		Br	PBBs	BL	/	
			PBDEs		/	
1.34	Purple plastic film	Pb		BL	/	Pass
		Cd		BL	/	
		Hg		BL	/	
		Cr	Cr ⁶⁺	BL	/	
		Br	PBBs	BL	/	
			PBDEs		/	

Test No.	Sample description	Test Item		XRF Results (mg/kg)	Chemical confirmation results(mg/kg)	Conclusion
1.35	Light green thread leather	Pb		BL	/	Pass
		Cd		BL	/	
		Hg		BL	/	
		Cr	Cr ⁶⁺	BL	/	
		Br	PBBs	BL	/	
			PBDEs		/	
1.36	Blue plastic film	Pb		BL	/	Pass
		Cd		BL	/	
		Hg		BL	/	
		Cr	Cr ⁶⁺	BL	/	
		Br	PBBs	BL	/	
			PBDEs		/	
1.37	Orange plastic film	Pb		BL	/	Pass
		Cd		BL	/	
		Hg		BL	/	
		Cr	Cr ⁶⁺	BL	/	
		Br	PBBs	BL	/	
			PBDEs		/	

Test No.	Sample description	Test Item		XRF Results (mg/kg)	Chemical confirmation results(mg/kg)	Conclusion
1.38	Yellow plastic film	Pb		BL	/	Pass
		Cd		BL	/	
		Hg		BL	/	
		Cr	Cr ⁶⁺	BL	/	
		Br	PBBs	BL	/	
			PBDEs		/	
1.40	Brown thread leather	Pb		BL	/	Pass
		Cd		BL	/	
		Hg		BL	/	
		Cr	Cr ⁶⁺	BL	/	
		Br	PBBs	BL	/	
			PBDEs		/	
1.41	Red thread leather	Pb		BL	/	Pass
		Cd		BL	/	
		Hg		BL	/	
		Cr	Cr ⁶⁺	BL	/	
		Br	PBBs	BL	/	
			PBDEs		/	

Test No.	Sample description	Test Item		XRF Results (mg/kg)	Chemical confirmation results(mg/kg)	Conclusion
1.42	Light brown thread leather	Pb		BL	/	Pass
		Cd		BL	/	
		Hg		BL	/	
		Cr	Cr ⁶⁺	BL	/	
		Br	PBBs	BL	/	
			PBDEs		/	
1.43	Blue thread leather	Pb		BL	/	Pass
		Cd		BL	/	
		Hg		BL	/	
		Cr	Cr ⁶⁺	BL	/	
		Br	PBBs	BL	/	
			PBDEs		/	
1.44	Yellow thread leather	Pb		BL	/	Pass
		Cd		BL	/	
		Hg		BL	/	
		Cr	Cr ⁶⁺	BL	/	
		Br	PBBs	BL	/	
			PBDEs		/	

Test No.	Sample description	Test Item		XRF Results (mg/kg)	Chemical confirmation results(mg/kg)	Conclusion
1.45	Orange thread leather	Pb		BL	/	Pass
		Cd		BL	/	
		Hg		BL	/	
		Cr	Cr ⁶⁺	BL	/	
		Br	PBBs	BL	/	
			PBDEs		/	
1.46	Metal cover	Pb		BL	/	Pass
		Cd		BL	/	
		Hg		BL	/	
		Cr	Cr ⁶⁺	BL	/	
1.47	Tape	Pb		BL	/	Pass
		Cd		BL	/	
		Hg		BL	/	
		Cr	Cr ⁶⁺	BL	/	
		Br	PBBs	BL	/	
			PBDEs		/	
1.48	Silver metal case	Pb		BL	/	Pass
		Cd		BL	/	
		Hg		BL	/	
		Cr	Cr ⁶⁺	X	Negative	

Test No.	Sample description	Test Item		XRF Results (mg/kg)	Chemical confirmation results(mg/kg)	Conclusion
1.49	Black plastic	Pb		BL	/	Pass
		Cd		BL	/	
		Hg		BL	/	
		Cr	Cr ⁶⁺	BL	/	
		Br	PBBs	BL	/	
			PBDEs		/	
1.50	Contact plate	Pb		BL	/	Pass
		Cd		BL	/	
		Hg		BL	/	
		Cr	Cr ⁶⁺	BL	/	
1.51	Silver metal sheet	Pb		BL	/	Pass
		Cd		BL	/	
		Hg		BL	/	
		Cr	Cr ⁶⁺	X	Negative	
1.52	Chip IC	Pb		BL	/	Pass
		Cd		BL	/	
		Hg		BL	/	
		Cr	Cr ⁶⁺	BL	/	
		Br	PBBs	BL	/	
			PBDEs		/	

Test No.	Sample description	Test Item		XRF Results (mg/kg)	Chemical confirmation results(mg/kg)	Conclusion
1.54	Chip inductance	Pb		BL	/	Pass
		Cd		BL	/	
		Hg		BL	/	
		Cr	Cr ⁶⁺	BL	/	
		Br	PBBs	BL	/	
			PBDEs		/	
1.55	Chip capacitance	Pb		BL	/	Pass
		Cd		BL	/	
		Hg		BL	/	
		Cr	Cr ⁶⁺	BL	/	
		Br	PBBs	BL	/	
			PBDEs		/	
1.61	Patch resistance	Pb		BL	/	Pass
		Cd		BL	/	
		Hg		BL	/	
		Cr	Cr ⁶⁺	BL	/	
		Br	PBBs	BL	/	
			PBDEs		/	

Test No.	Sample description	Test Item		XRF Results (mg/kg)	Chemical confirmation results(mg/kg)	Conclusion
1.63	Chip capacitance	Pb		BL	/	Pass
		Cd		BL	/	
		Hg		BL	/	
		Cr	Cr ⁶⁺	BL	/	
		Br	PBBs	BL	/	
			PBDEs		/	
1.64	Black plastic	Pb		BL	/	Pass
		Cd		BL	/	
		Hg		BL	/	
		Cr	Cr ⁶⁺	BL	/	
		Br	PBBs	BL	/	
			PBDEs		/	
1.65	PCB board	Pb		BL	/	Pass
		Cd		BL	/	
		Hg		BL	/	
		Cr	Cr ⁶⁺	BL	/	
		Br	PBBs	BL	/	
			PBDEs		/	

Test No.	Sample description	Test Item		XRF Results (mg/kg)	Chemical confirmation results(mg/kg)	Conclusion
1.66.1	Chip inductor body	Pb		BL	/	Pass
		Cd		BL	/	
		Hg		BL	/	
		Cr	Cr ⁶⁺	X	N.D.	
		Br	PBBs	BL	/	
			PBDEs		/	
1.66.2	Chip inductor core	Pb		BL	/	Pass
		Cd		BL	/	
		Hg		BL	/	
		Cr	Cr ⁶⁺	X	Negative	

2.Phtalate

Test item	Limit (mg/kg)	Chemical confirmation results(mg/kg)				
		1.2	1.5	1.8	1.10	1.13
Diisobutyl phthalate (DIBP)	1000	N.D.	N.D.	N.D.	N.D.	N.D.
Dibutyl phthalate (DBP)	1000	N.D.	N.D.	N.D.	N.D.	N.D.
Butyl benzyl phthalate (BBP)	1000	N.D.	N.D.	N.D.	N.D.	N.D.
Phthalate (2 -) ethyl ester (DEHP)	1000	N.D.	N.D.	N.D.	N.D.	445
Conclusion	/	Pass	Pass	Pass	Pass	Pass

Test item	Limit (mg/kg)	Chemical confirmation results(mg/kg)				
		1.14	1.15	1.16	1.17	1.18
Diisobutyl phthalate (DIBP)	1000	N.D.	N.D.	N.D.	N.D.	N.D.
Dibutyl phthalate (DBP)	1000	N.D.	N.D.	N.D.	N.D.	N.D.
Butyl benzyl phthalate (BBP)	1000	N.D.	N.D.	N.D.	N.D.	N.D.
Phthalate (2 -) ethyl ester (DEHP)	1000	N.D.	N.D.	N.D.	N.D.	N.D.
Conclusion	/	Pass	Pass	Pass	Pass	Pass

Test item	Limit (mg/kg)	Chemical confirmation results(mg/kg)				
		1.19	1.20	1.24	1.25	1.28
Diisobutyl phthalate (DIBP)	1000	N.D.	N.D.	N.D.	N.D.	N.D.
Dibutyl phthalate (DBP)	1000	N.D.	N.D.	N.D.	N.D.	N.D.
Butyl benzyl phthalate (BBP)	1000	N.D.	N.D.	N.D.	N.D.	N.D.
Phthalate (2 -) ethyl ester (DEHP)	1000	134	N.D.	N.D.	N.D.	N.D.
Conclusion	/	Pass	Pass	Pass	Pass	Pass

Test item	Limit (mg/kg)	Chemical confirmation results(mg/kg)				
		1.30	1.32	1.34	1.35	1.36
Diisobutyl phthalate (DIBP)	1000	N.D.	N.D.	N.D.	N.D.	N.D.
Dibutyl phthalate (DBP)	1000	N.D.	N.D.	N.D.	N.D.	N.D.
Butyl benzyl phthalate (BBP)	1000	N.D.	N.D.	N.D.	N.D.	N.D.
Phthalate (2 -) ethyl ester (DEHP)	1000	N.D.	N.D.	N.D.	171	N.D.
Conclusion	/	Pass	Pass	Pass	Pass	Pass

Test item	Limit (mg/kg)	Chemical confirmation results(mg/kg)				
		1.37	1.38	1.40	1.41	1.42
Diisobutyl phthalate (DIBP)	1000	N.D.	N.D.	N.D.	N.D.	N.D.
Dibutyl phthalate (DBP)	1000	N.D.	N.D.	N.D.	N.D.	N.D.
Butyl benzyl phthalate (BBP)	1000	N.D.	N.D.	N.D.	N.D.	N.D.
Phthalate (2 -) ethyl ester (DEHP)	1000	N.D.	N.D.	N.D.	N.D.	N.D.
Conclusion	/	Pass	Pass	Pass	Pass	Pass

Test item	Limit (mg/kg)	Chemical confirmation results(mg/kg)				
		1.43	1.44	1.45	1.47	1.49
Diisobutyl phthalate (DIBP)	1000	N.D.	N.D.	N.D.	N.D.	N.D.
Dibutyl phthalate (DBP)	1000	N.D.	N.D.	N.D.	N.D.	N.D.
Butyl benzyl phthalate (BBP)	1000	N.D.	N.D.	N.D.	N.D.	N.D.
Phthalate (2 -) ethyl ester (DEHP)	1000	N.D.	N.D.	N.D.	N.D.	N.D.
Conclusion	/	Pass	Pass	Pass	Pass	Pass

Test item	Limit (mg/kg)	Chemical confirmation results(mg/kg)				
		1.52	1.54	1.55	1.61	1.63
Diisobutyl phthalate (DIBP)	1000	N.D.	N.D.	N.D.	N.D.	N.D.
Dibutyl phthalate (DBP)	1000	N.D.	N.D.	N.D.	N.D.	N.D.
Butyl benzyl phthalate (BBP)	1000	N.D.	N.D.	N.D.	N.D.	N.D.
Phthalate (2 -) ethyl ester (DEHP)	1000	N.D.	N.D.	N.D.	N.D.	N.D.
Conclusion	/	Pass	Pass	Pass	Pass	Pass

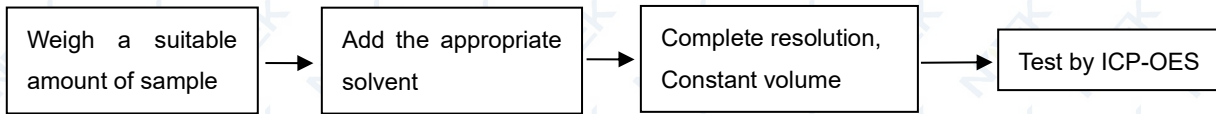
Test item	Limit (mg/kg)	Chemical confirmation results(mg/kg)		
		1.64	1.65	1.66.1
Diisobutyl phthalate (DIBP)	1000	N.D.	N.D.	N.D.
Dibutyl phthalate (DBP)	1000	N.D.	N.D.	N.D.
Butyl benzyl phthalate (BBP)	1000	N.D.	N.D.	N.D.
Phthalate (2 -) ethyl ester (DEHP)	1000	N.D.	N.D.	N.D.
Conclusion	/	Pass	Pass	Pass

Illustrate: 1mg/kg=1ppm = 0.0001% N.D.=Not detected(<MDL)
MDL=Method Detection Limit /≠Not test

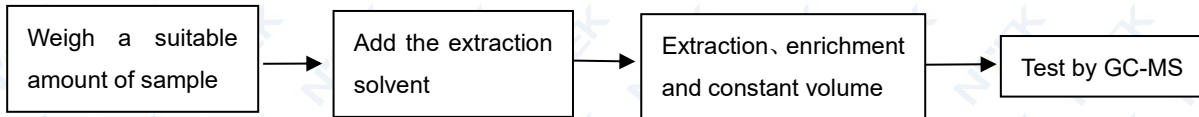
- Note:
1. The XRF scan shows the total chromium result, while the restricted substance is hexavalent chromium.
 2. The XRF scan shows the total bromine result, while the restricted substances are polybrominated biphenyls and polybrominated diphenyl ethers.
 - 3.Negative: indicates no hexavalent chromium.Due to the unknown storage conditions and production dates of the samples, the hexavalent chromium test results of the samples can only represent the state of the samples containing hexavalent chromium at the time of testing.

Testing Flow

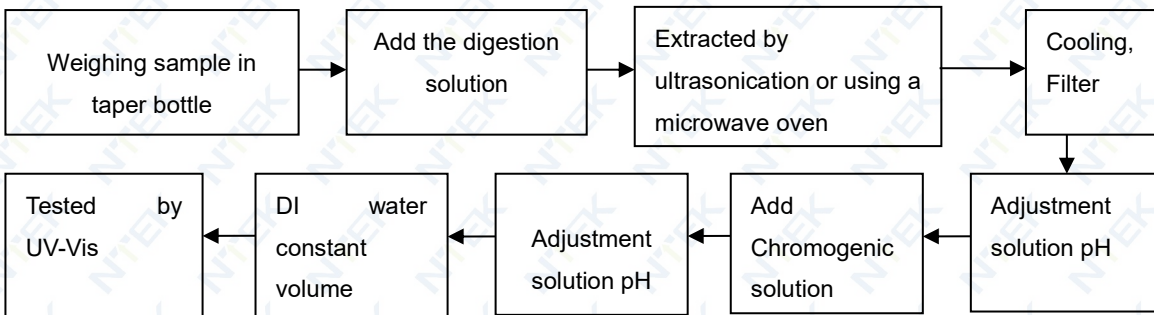
1、 Test item:Lead, Cadmium and Mercury



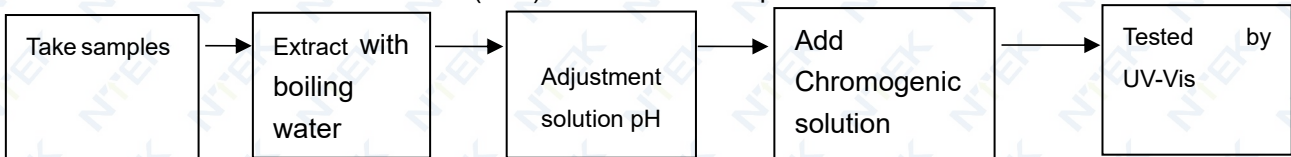
2、 Test item: PBBs/PBDEs



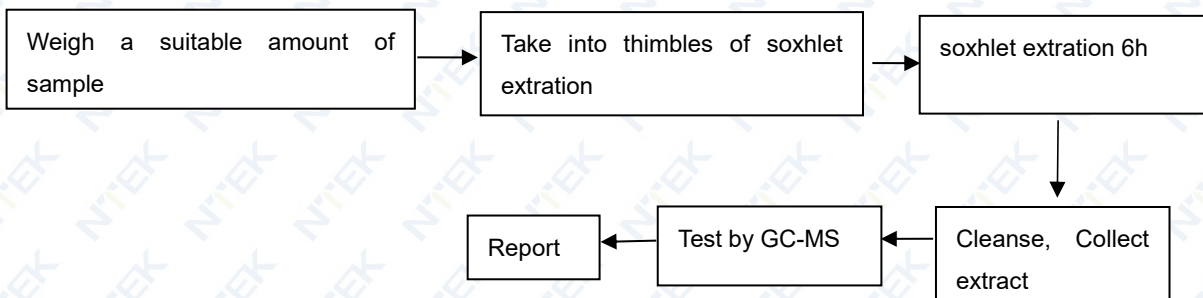
3.1、 Test item: Hexavalent Chromium (Cr⁶⁺) (Non-metal samples)



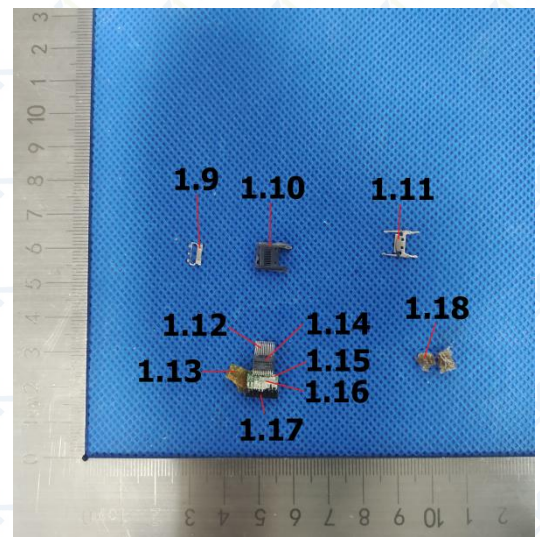
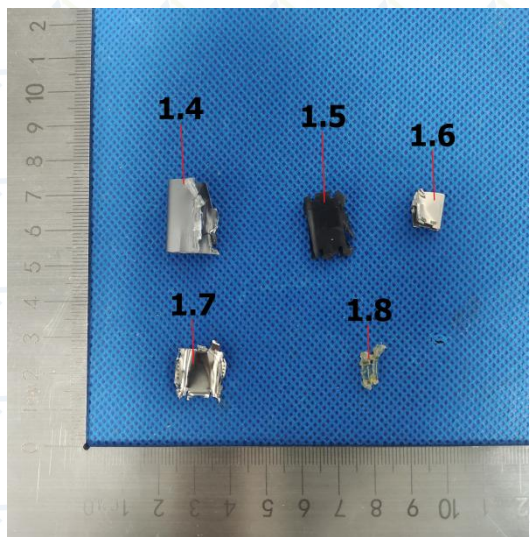
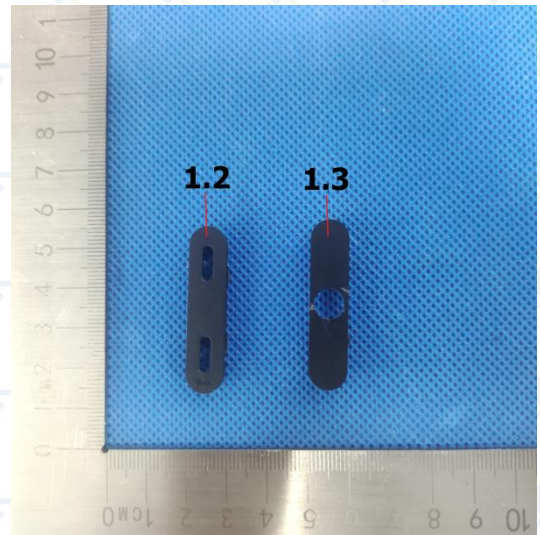
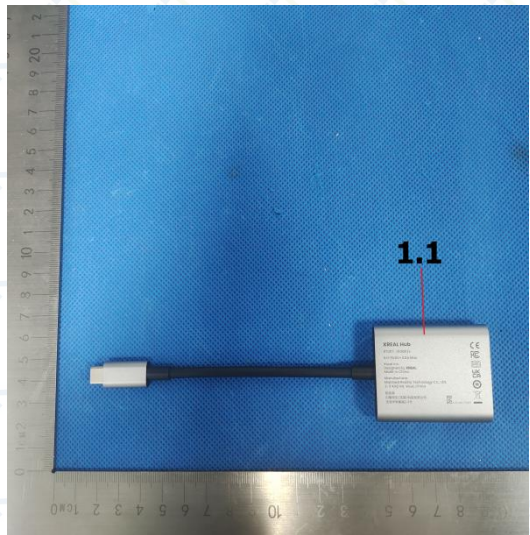
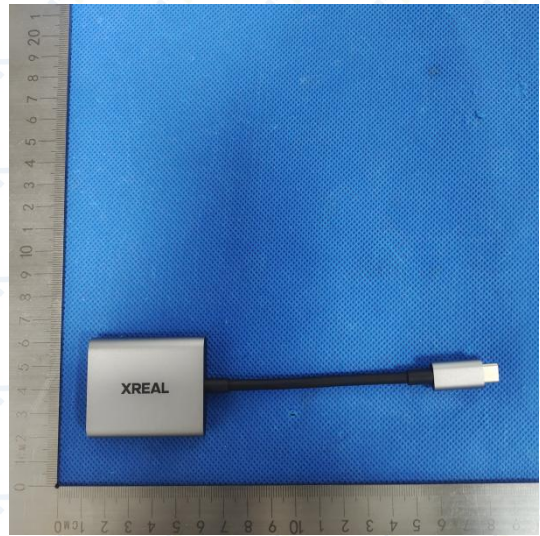
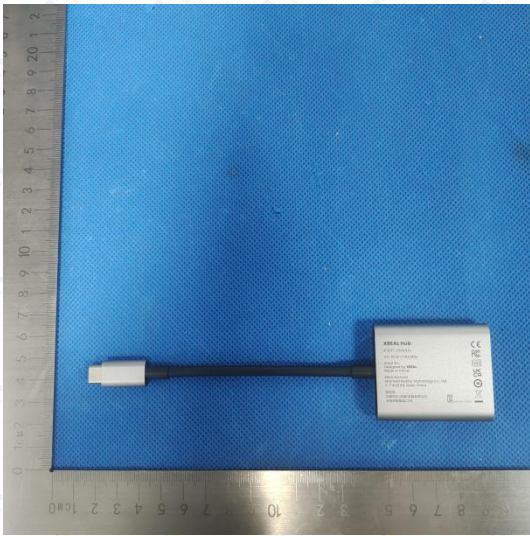
3.2、 Test item: Hexavalent Chromium (Cr⁶⁺) (Non-metal samples)

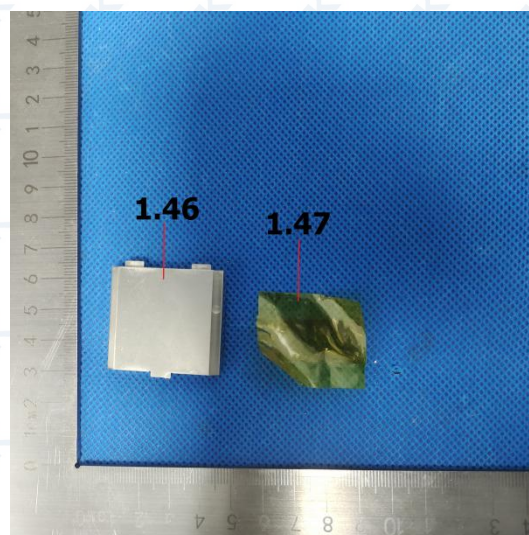
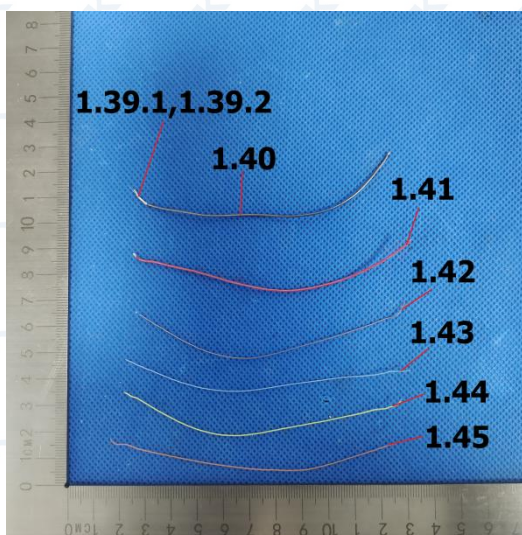
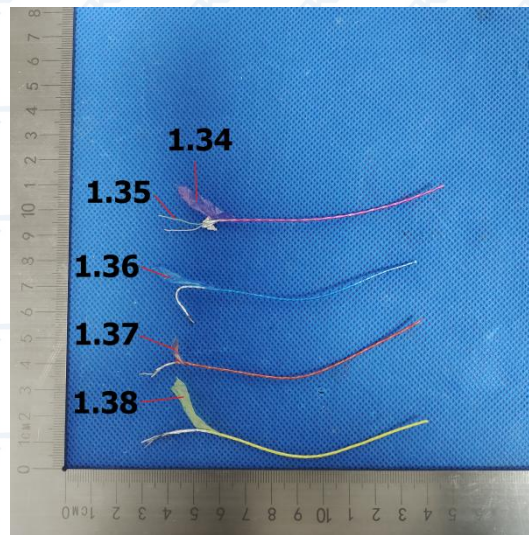
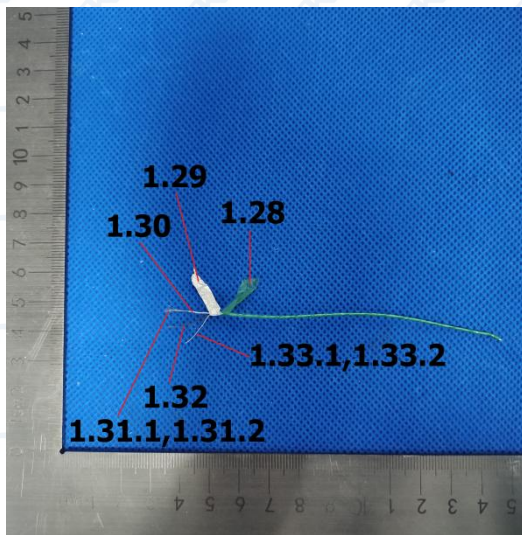
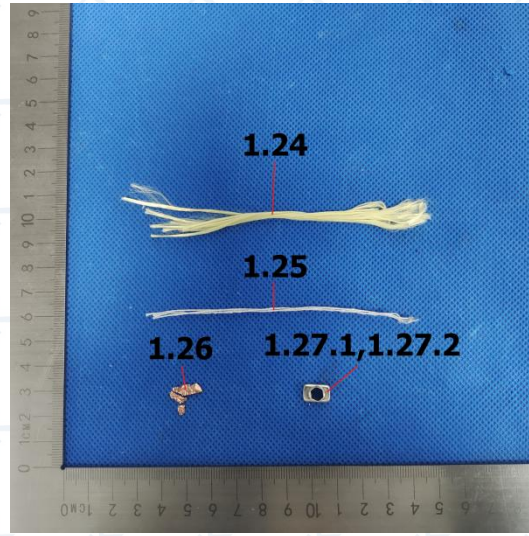
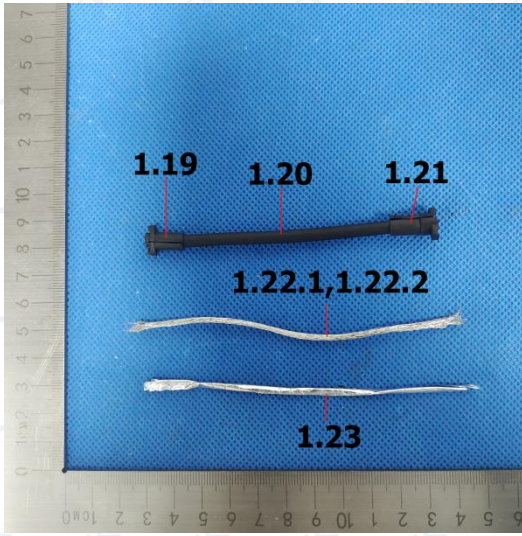


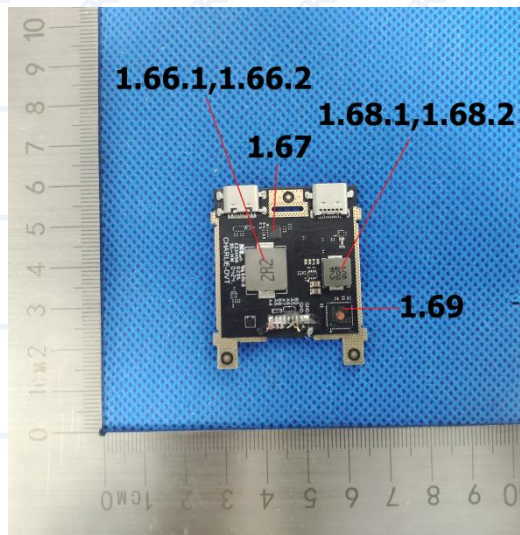
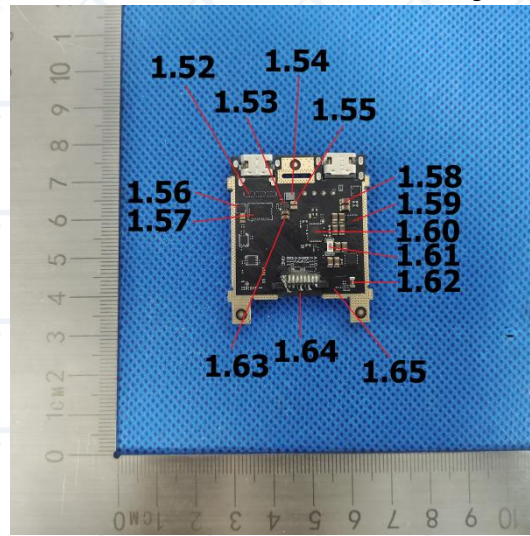
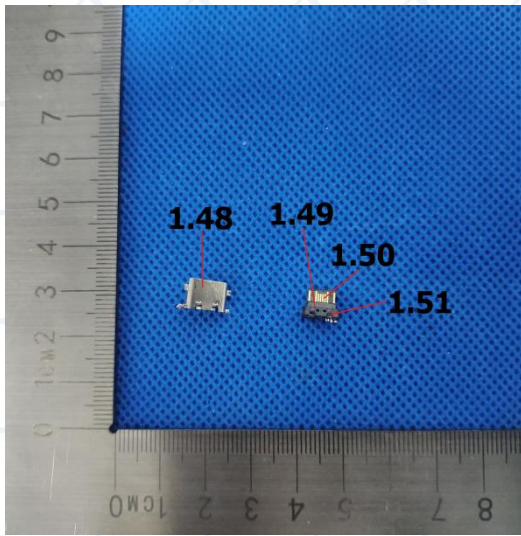
4. Test item: four phthalates (DEHP,BBP,DBP,DIBP)



Photograph of Sample







End of Report

Report statement

1. This report is responsible for the tested samples only;
2. This report is invalid without the signatures of Author , Reviewer and Approver, This report is invalid without Inspection&Testing Seal;
3. Any photocopies of this test report is forbidden without the written consent of our company;
4. If you have any objection to this report, please submit it to our company within 30 days from the date of issue of the report;
5. The data and results in this report are only for the purposes of teaching, scientific research, enterprise product development and internal quality control.